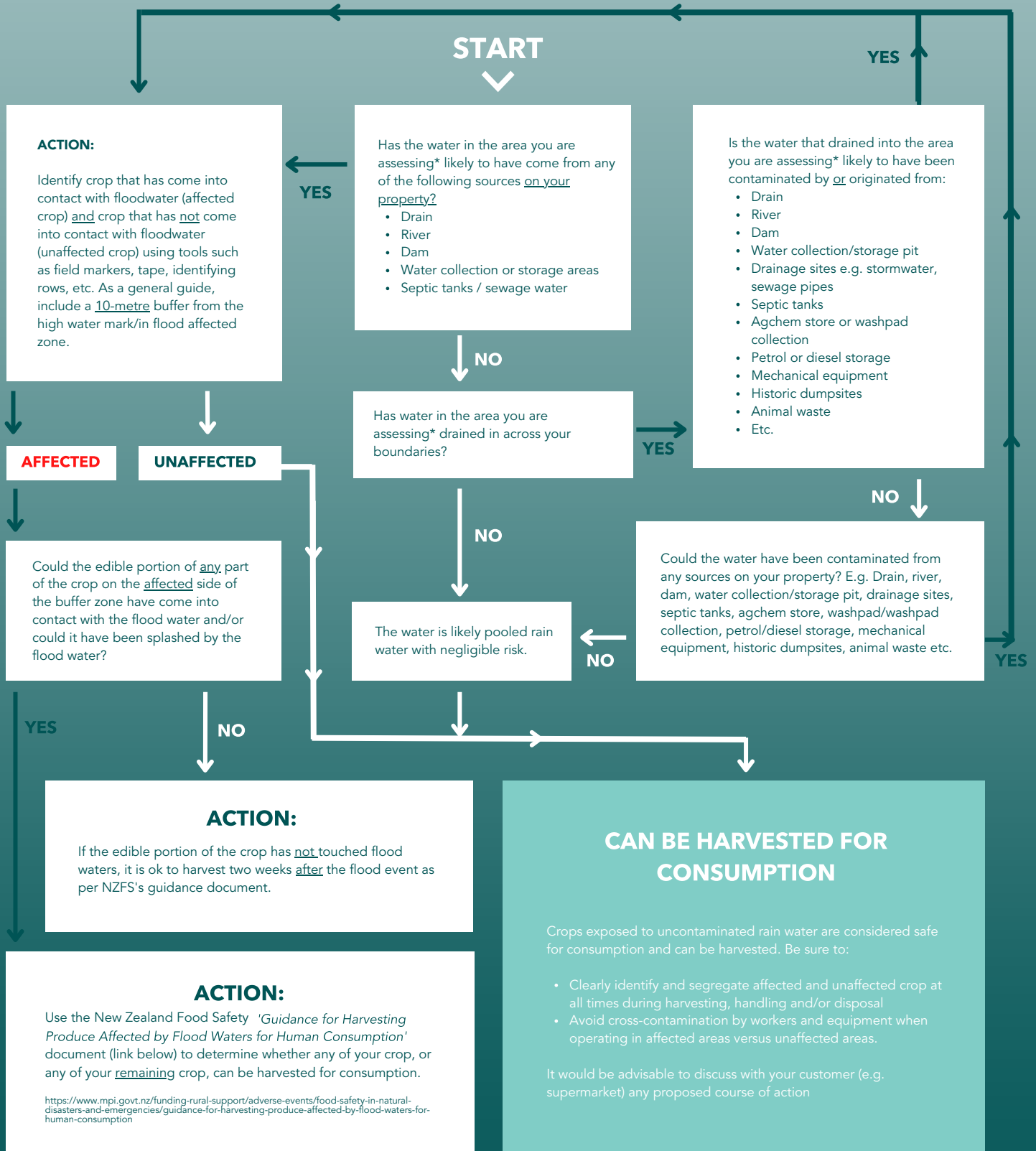




GROWER DECISION TREE FOR FLOOD-AFFECTED PRODUCE



This document was developed primarily as guidance for flood-affected vegetable/ground crops. It is not intended to replace any official advice. Growers are required to act in accordance with New Zealand Food Safety regulations. Contact NZFS for any further questions you have regarding flood-affected produce: info@mpi.govt.nz | 0800 00 83 33

While every effort has been made to ensure the information in this publication is accurate, Horticulture New Zealand does not accept any responsibility or liability for error of fact, omission, interpretation or opinion that may be present, nor for the consequences of any decisions based on this information.

*The area you are assessing may include the entire property, an individual block or group of blocks, a crop etc.

Version 4 - 2 March 2023